



LISBON 2021

Karate1 Premier League Lisbon 2021

30 APRIL 2 MAY

CONTENTS

1_WELCOME MESSAGE	4
1.1 Greeting from the Head of the host NF	
2_INTRODUCTION	5
3_INTRODUCTION KARATE 1-PREMIER LEAGUE LISBON 2021	5
4_COMPETITION INFORMATION	5
4.1 Categories	
4.2 Prizes	
5_CONTACTS INFORMATION	6
5.1 Organizers contact details	
5.2 Local Organising Committee contact details	
5.3 WKF Event Supervisor contact	
5.4 Covid Team contact	
5.5 Safe Sport contact	
6_WKF APPROVED PROTECTIONS, KARATEGIS & TATAMIS	7
7_EVENTS SCHEDULE	9
8_RANKING	12
9_ONLINE REGISTRATION & OFFICIAL ACCREDITATION	12
9.1 Online Registration Process	
9.2 Entry Fee	
9.3 Payment	
9.4 Official Accreditation	
10_BACK NUMBERS	14

11_WKF COACH COURSE	14
11.1 WKF Programme for Coaches, Lisbon 2021	
11.1.1 Schedule	
11.1.2 Online Registration	
11.1.3 Fees	
11.1.4 Payment	
12_MEDIA	16
12.1 TV Production	
12.2 Press	
13_COMPETITION VENUE	17
14_TICKET FOR SPECTATORS	17
15_HOTELS	17
15.1 HQ Hotel	
15.2 Official hotels	
15.3 Hotels Prices	
16_WKF COVID PROTOCOL	22
17_REQUIRED DOCUMENTS	23
18_VISAREQUIREMENTS	23
19_LISBON / PORTUGAL INFORMATION	24
19.1 About LISBON	
19.2 How to get to LISBON	
19.3 Practical Information	
20_MERCHANDISING	25
21_OMISSIONS	25

1. WELCOME

1.1 Greeting from the Head of the host NF

Dear participants,

After the last event held in Portugal in 2014, promoted by the European Karate Federation, Portugal is known at the fore front of World Karate.

The Federação Nacional de Karate – Portugal is proud to organize the Karate 1 – Premier League, an event of high international prestige.

We have set targets to revalue this sport and to perform organizational affirmation. The pandemic and all its effects (economic difficulties) have become an obstacle to overcome. It is for this reason that this event, in a general perspective, gives us cause for enhanced satisfaction, reflecting the dynamics of karate, in general, and specifically in Portugal.

We hope and wish that this Karate 1 – Premier League, will be a great championship for the World Karate family. We will do everything to make sure that you are presented with an excellent stay, feeling that you participated in an event of excellence that provided you unforgettable moments.

As President of the Federação Nacional de Karate – Portugal, I would like to welcome you and said we are working with all the commitment, so that you may feel the warmest welcome.

Thank you for honoring our Federation with your presence in Portugal.
Greetings,

Carlos Silva

Federação Nacional de Karate – Portugal's President



2. INTRODUCTION

The Karate1-Premier League is the most important league event in the world of Karate. It comprises of a number of the most prominent Karate competitions and endeavours to bring together the best Karate athletes in the world in an open Championships of unprecedented scale and quality.

Initiated in 2011, the 2021 edition is formed by five events being held in the cities of Lisbon, Baku, Rabat, Tashkent and Moscow thus stating Karate's impact all around the world and its global scale. The city of Lisbon hosts a Karate 1-Premier League event for the 1st time.

At the final Premier League event 2021 or the first Premier League event 2022, the champions of each category are presented with the "Grand Winners" award. In order to be eligible to receive the "Grand Winners" award, competitors have to participate in at least 4 events in 2 continents of the season.

3. INTRODUCTION KARATE 1-PREMIER LEAGUE LISBON 2021

The Karate 1 – Premier League Lisbon 2021 will be held next April 30th to May 2nd, at the Altice Arena Sport Hall, located in Parque das Nações, Rossio dos Olivais, Lot 2.13.01A, 1990-231 Lisbon.

4. COMPETITION INFORMATION

4.1 Categories

The competition categories are identical to those of Senior World Championships except for Kumite team.

KATA

Individual Female/Male
Team Female/Male

KUMITE

Female	-50 kg, -55kg, -61 kg, -68 kg, +68kg
Male	-60 kg, -67 kg, -75 kg, -84 kg, +84 kg

4.2 Prizes

For individual categories (Kumite and Kata):

- Gold Medalist: 750 €
- Silver Medalist: 500 €
- Third Places: 200 €

For Kata team categories:

- Gold Medalist: 750 €
- Silver Medalist: 500 €
- Third Places: 200 €

5. CONTACTS INFORMATION

5.1 Organizers contact details

Federação Nacional de Karate – Portugal

Address: Rua do Cruzeiro nº11A. 1300-160 Lisboa – PORTUGAL

E-mail: fnkp@fnkp.pt

Mobile +351 967 162 645

5.2 Local Organising Committee contact details

Head Coordinator – Carlos Silva

presidente@fnkp.pt

M +351 960 164 777

Coordinator – Hugo Pedro

Coordinator.pl1@fnkp.pt

M +351 918 798 854

Secretariat and general issues – Sara Martins

secretary.pl1@fnkp.pt

M +351 967 162 645

Logistics, hotel, transfers, catering and payments – Rita Pinto

logistics.pl1@fnkp.pt

M +351 913 600 815

COVID-19 Protocol – João Pereira

covid19protocol.pl1@fnkp.pt

M +351 967 162 572

Website –

<https://k1lisbon.fnkp.pt/>

Facebook –

<https://www.facebook.com/karatepremierleaguelisboa>

Instagram –

https://www.instagram.com/karate_premier_league_lisboa/

5.3 WKF Event Supervisor contact

The WKF Event Supervisor for this event is Mr. Dominique Sigillo.

His contact details are as follows:

Email: sigillo.wkf@gmail.com

5.4 Covid Team contact

Michael Wenner

Email: mwenner@wkf.net

5.5 Safe Sport contact

WKF events must be safe for all athletes and participants and entirely free from any form of non-accidental violence, namely, harassment and abuse. Any such behaviour will not be tolerated.

If you or someone you know has been the victim of abuse or harassment in Karate, get help and report it.

Your first point of contact for any incident at this event is the WKF Event Supervisor, whose contact information you can find detailed above.

Otherwise, any other incident can be reported via the [WKF Official Complaint Form](#) and sent to: safekarate@wkf.net

6. WKF APPROVED ITEMS

The Karate 1-Premier League complies with the highest level of presentation. In order to guarantee the correct delivery of the event, and to ensure the suitable quality of the tournament, exclusively the following brands are WKF Approved for use in the Karate1–Premier League 2021 season.

SPORT PROTECTIONS WKF Approved

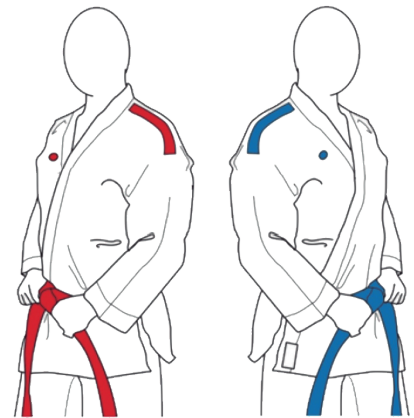


*Click on the logos to see the brand information

OFFICIAL KARATEGI KARATE 1 - PREMIER LEAGUE

Kumite and Kata karategis with the brand name embroidered on the shoulders in **RED** or **BLUE** are of mandatory use in Karate1 - Premier League tournaments.

The authorized companies to use these karategis models are those with Sport Protections WKF Approved, listed below:



ADIDAS

ARAWAZA

BEST SPORTS

BUDO NORD

DAEDO

HAYASHI

PUNOK

SHUREIDO

SMAI

TOKAIDO

WACOKU

WESING

TATAMIS WKF APPROVED

ishii

PROGNOME
TATAMI BY TROCELLEN

TaiShan

TatamiX

WESING 九日山

*Click on the logos to see the brand information

DISTRIBUTORS ASSISTANCE

Click on the image to visit the distributors by countries.



7. EVENTS SCHEDULE

DUE TO THE CURRENT EMERGENCY HEALTH SITUATION THIS EVENT WILL BE HELD UNDER THE WKF COVID PROTOCOL:



Key Elements



Karate in Times of Coronavirus

In order to respect and properly follow the WKF Covid Protocol, the schedules below will be strictly followed.

29/04/2021	ACTIVITY	PLACE
REGISTRATION FOR PREMIER LEAGUE		
09:00 – 17:00 h	<p>The onsite registration will be completed as follows; CHECKING OF THE COVID DOCUMENTATION [Section 17] FOR ALL DELEGATION MEMBERS</p> <p><u>ATHLETES*</u></p> <p>CHECKING OF COVID DOCUMENTATIONS [Section 17] ONSITE REGISTRATION AND ACCREDITATIONS' DELIVERY <u>WEIGH-IN</u></p> <p><u>OFFICIATING COACHES, DOCTORS, PHYSIOTHERAPIST*</u></p> <p>CHECKING OF COVID DOCUMENTATIONS ONSITE [Section 17] REGISTRATION AND ACCREDITATIONS' DELIVERY</p> <p><i>*The ANTIGEN TESTING for athletes, officiating coaches, doctors, physiotherapist will take place each day of competition.</i></p> <p><u>OFFICIALS AND REFEREES</u></p> <p>CHECKING OF COVID DOCUMENTATIONS ONSITE [Section 17] ANTIGEN TEST Upon reception a negative result of the antigen test, DELIVERY OF ACCREDITATIONS.</p> <p><i>Timeslots by alphabetic order of Countries will be applied to ensure a smooth onsite registration process. Such timeslot will be established once finished the online registration.</i></p>	ALICE ARENA
18:30 h	DRAWS and COACH MEETING	ONLINE
20:00 – 21:30 h	REFEREES BRIEFING	ALICE ARENA

WKF COACH COURSE

09:00 – 17:00 h	The onsite registration for those COACHES ATTENDEES THE WKF COACH PROGRAMME will be completed as follows; CHECKING OF THE COVID DOCUMENTATION [Section 17] ONSITE REGISTRATION AND PRE - ACCREDITATIONS' DELIVERY [Coaching Course Accreditation] ANTIGEN TEST [Stamped CC Accreditation]	ALICE ARENA
17:00 – 18:30 h	ACCREDITED COACH BRIEFING	
18:30 – 19:15 h	KUMITE COACH EXAMINATION	
19:15 – 20:00 h	KATA COACH EXAMINATION	
20:00 – 20:30 h	COACH EXAMINATIONS RESULTS AND DELIVERY OF THE EVENT ACCREDITATIONS (to those approved coaches)	

COMPETITION PROGRAMME

FRIDAY (April 30 th , 2021)	ACTIVITY	PLACE
<u><i>Eliminations & Semifinals</i></u>		
09:00 hrs	Kata Individual Female	Altice Arena
11:00 hrs	<i>Kata Team Male</i>	Altice Arena
<u><i>Eliminations & Repechages</i></u>		
12:00 hrs	<i>Kumite Male – 60 kg</i>	Altice Arena
14:00 hrs	<i>Kumite Female – 50 kg</i>	Altice Arena
16:00 hrs	<i>Kumite Male – 67 kg</i>	Altice Arena
18:00 hrs	<i>Kumite Female – 55 kg</i>	Altice Arena
20:00 hrs	<i>Kumite Male – 75 kg</i>	Altice Arena

SATURDAY (May 1 st , 2021)	ACTIVITY	PLACE
<u>Eliminations & Semifinals</u>		
09:00 hrs	Kata Individual Male	Altice Arena
11:00 hrs	Kata Team Female	Altice Arena
<u>Eliminations & Repechages</u>		
12:00 hrs	Kumite Female – 61 kg	Altice Arena
14:00 hrs	Kumite Male – 84 kg	Altice Arena
16:00 hrs	Kumite Female – 68 kg	Altice Arena
18:00 hrs	Kumite Male + 84 kg	Altice Arena
20:00 hrs	Kumite Female + 68 kg	Altice Arena

TV Produced	SUNDAY (May 2 nd , 2021)	ACTIVITY	PLACE
	<u>Third Places Bouts</u>		
	09:00 hrs	Kata Individual Female/Male	Altice Arena
		Female (-50), Male (-60)	Altice Arena
		Female (-55), Male (-67)	Altice Arena
		Female (-61), Male (-75)	Altice Arena
		Female (-68), Male (-84)	Altice Arena
		Female (+68), Male (+84)	Altice Arena
	12:55 hrs	Kata Team Female / Male	Altice Arena
	13:55 hrs	Break	
	<u>Finals</u>		
	15:00 hrs	Kata Individual Female / Male	Altice Arena
		Female (-50), Male (-60)	Altice Arena
		Female (-55), Male (-67)	Altice Arena
		Female (-61), Male (-75)	Altice Arena
		Female (-68), Male (-84)	Altice Arena
		Female (+68), Male (+84)	Altice Arena
		Kata Team Female / Male	Altice Arena
	18:30 hrs	<u>Award Ceremony</u>	

The detailed competition schedule will be fixed after closing the online registration in order to adequate it to the final number of athletes.

Only the categories appointed will be allowed to stay in the stadium during the authorized timetables.

Detailed information will be communicated at due time.

8. RANKING

Competitors can earn ranking points in every Karate1-Premier League event according to the official WKF Ranking Criteria, point 3.2 of the WKF World Ranking Rules; https://www.wkf.net/pdf/wkf_worldranking_rules.pdf

The applicable ranking will be the one updated on the day of the registration opening, December 19th, 2020. [LINK](#)

9. ONLINE REGISTRATION & OFFICIAL ACCREDITATION

All registration in a Karate-1 Premier League event must be processed **ONLINE**. Onsite registrations will **NOT** be accepted.

The registration will be validated once completed the online payment through the payment platform.

9.1 Online Registration Process

The registration starts two (2) months prior to the event, on December 19th, 2020 and close fifteen (15) days before the tournament, on April 15th, 2021 at the 12:00 hrs GMT +0 and it is divided in the following three phases (all phases will close at the 12:00 hrs GMT +0 of the listed day);

- **Phase 1, from December 19th, 2020 to January 2nd, 2021:** Limited to the NFs, TWO competitors per category and country, ranked among the position n° 1 and n° 50 (included) of the WKF ranking, regardless of double positions.
- **Phase 2, from January 3rd to 17th, 2021:** If any of the TWO registrations of the phase 1 have not been completed by the NFs, free registration of athletes, ranked among the position n° 1 and n° 50 (included) of the WKF ranking, regardless of double positions (always keeping the limit of TWO per country).
- **Phase 3, from January 18th, 2021 to April 15th, 2021:** Free registration, limited to 64 athletes per category, ranked among the position n° 1 and n° 200 (included) of the WKF ranking, regardless of double positions.

All competitor registrations must be made online through the following Sportdata link:

<https://www.sportdata.org/wkf/set.php?id=468>

All referee registrations must be made online through the following Sportdata link:

<https://www.sportdata.org/wkf/set.php?id=497>

All coach registrations must be made online through the following Sportdata link:

<https://www.sportdata.org/wkf/set.php?id=496>

Individuals and National Federations are responsible for the quality of the entered registration data. Once close the online registration, any comments will have to be notified to both, the software team and the WKF, at latest five days before the first day of competition.

Technical Support for Online Registration

In case of any questions concerning the online registration please directly contact the Sportdata software team via the email address; karate1@sportdata.org or office@sportdata.org

9.2 Entry Fee

The entry fees are € 75 per individual category entry and € 150 per team category entry.

9.3 Payments

Payments must be processed through the **ONLINE PAYMENT PLATFORM**. Onsite payments will **NOT** be accepted.

9.4 Official Accreditation

The official accreditation will take place on Thursday, 29/04/2021, from 09.00 a.m. to 17.00 p.m. at the Altice Arena.

If changes are required during the official registration session, because of incorrect or missing registration data, a fee of € 20 is charged for each change.

At registration, accreditation cards will be issued with the participants main data, a photograph and information about registered categories. The accreditation card must be worn at all times during the event.

Only members of national federations recognized by WKF are admitted to participate, as per **Karate1 - Premier League Organising Rules 2020 (PL OR Point 6 Registration)**.

All participants must submit an official document (passport or other valid ID card) for the WKF identification and validation at the accreditation session.

The accreditation of any competitor must be done by the athlete or the athlete's coach, in person bringing the athlete passport or other valid ID at the accreditation session.

The competitor who has not collected, either personally or through his/her coach the accreditation during the official registration, will not be included in the draw.

The weighing will be carried out immediately after receiving the accreditation, those athletes who will not attend the weighing will not be included in the draw.



10. BACK NUMBERS

The use of back numbers is compulsory for all categories and modalities in Karate1-Premier League events. The back numbers to be used in Karate1-Premier League events 2021 will be the same as those already provided for Karate1-Premier League events 2020.

New back numbers will only be delivered at the accreditation session to those athletes who have not participated in a Karate1-Premier League event 2020.

All competitors are required to carry properly sewn on the back of their karategi's jacket.

Due to the prevention measures for the Covid-19 pandemic the sewing of the back number on the karategis must be done by the competitor himself/herself.

If the back number is not properly sewn, it can be a reason for disqualification.



Official Back Number.

11. WKF COACH COURSE

According to the WKF Coach Educational Programme, the minimum certification required to take part in Karate 1 – Premier League events is the “Kumite or Kata certification” (level 2). To obtain such certification, coaches must pass the corresponding Kumite or Kata examination.

The Kumite or Kata coach licence can be obtained or:

- through the WKF E-learning platform for Coaches; www.elearning-wkf.net
- or by attending to one of the Programmes for Coaches that the WKF held in official events.

A WKF Programme for Coaches will be held in all **Karate 1 - Premier League** events 2021.

Only coaches in possession of the “WKF Accredited Coach” level have access to the “WKF Kumite or Kata certification”.

Due to the health recommendations of social distancing because of the Covid-19 pandemic, we recommend to obtain/renew the coach licenses through the WKF E-learning platform.



Official Coach AO Box.

11.1 WKF Coache Course, Lisbon 2021

Please find below the Coach schedule and the details for the registration process:

11.1.1 Schedule

Please see Section “7. Event Schedule” for the detailed registration and antigen test schedules.

Accredited Coach Briefing				
Thursday	29/04/2021	from 17:00 hrs	to 18:30 hrs	Altice Arena
Certified Kumite Coach Examination				
Thursday	29/04/2021	from 18:30 hrs	to 19:15 hrs	Altice Arena
Certified Kata Coach Examination				
Thursday	29/04/2021	from 19:15 hrs	to 20:00 hrs	Altice Arena

*** Please note that it is possible to take part in both the “Accredited Coach Briefing” and the “Certified Kata and/or Kumite Coach Exams”.***

11.1.2 Online Registration

Those coaches who wish to attend to the “WKF Coach Programme” in Lisbon must be registered online with deadline April 15th, 2021 through the following link;

https://www.sportdata.org/wkf/set-online/veranstaltung_info_main.php?active_menu=calendar&vern=499#a_eventhead

Should you have any difficulties when registering, please contact support@sportsid.org for technical support.

11.1.3 Fees

We would like to remind you that the fees for the Program for WKF Coaches are as follows:

Briefing for “Accredited Coach” level (new application or license renewal)

300 CHF

Examination for “Certified Kumite Coach” (new application or license renewal)

250 CHF

Examination for “Certified Kata Coach” (new application or license renewal)

250 CHF

11.1.4 Payment

All payments must be made through Sportdata platform.

No other methods of payment will be accepted.

Registrations and payments onsite will not be accepted.

12. MEDIA

12.1 TV Production

All the events of the **Karate1 – Premier League 2021** will broadcast on TV. The competition on Sunday will be available to a worldwide viewing audience through a high-quality TV production which will be provided to TV networks around the world following the agreement of the WKF with these networks.

Due to these agreements VIDEO RECORDING WILL NOT BE ALLOWED UNDER ANY CIRCUMSTANCE.

12.2 Press

Press accreditation can only be given to professional journalists working for a media and having proof of their credentials.

Media professionals can register to request press accreditations through the on line registration form which can be found here: https://www.sportdata.org/wkf/set-online/veranstaltung_info_main.php?active_menu=calendar&vern=468&ver_info_action=pressregistration#a_presshead

All press accredited shall follow the WKF Covid 19 Protocol (Section 16) which includes submitting the Original Negative PCR Nasopharyngeal Tests, Waiver of Responsibility as well as the WKF Health Questionnaire (Section 17). All press shall wear protective face mask described in Section 16.

Moreover, they will be required to wear a certified face mask at all times and will be compelled to follow the local sanitary measures and WKF COVID Protocol.

Should you need more information about press or media related issues, please contact the World Karate Federation's office: press@wkf.net

13. COMPETITION VENUE

Altice Arena Sport Hall - Rossio dos Olivais,
Lot 2.13.01A, 1990-231 Lisbon

OFFICIAL TATAMI FOR THIS TOURNAMENT



14. TICKET FOR SPECTATORS

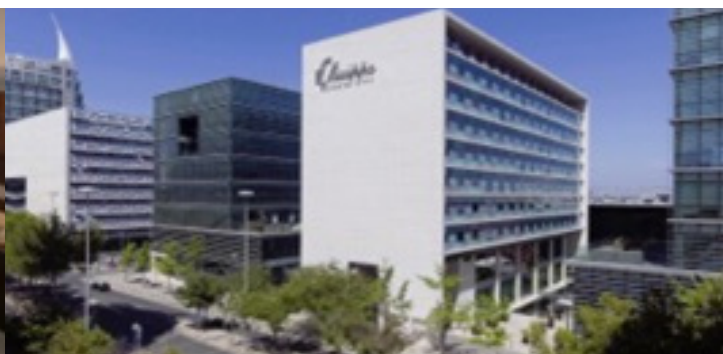
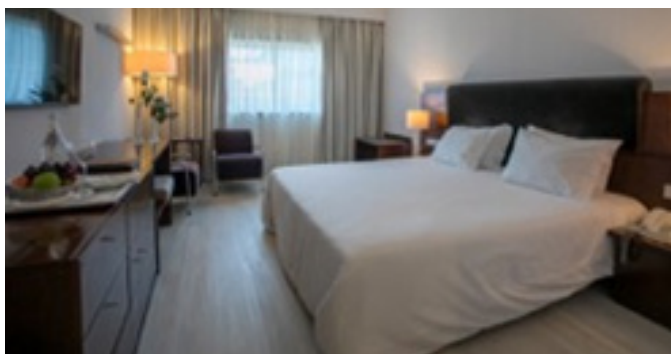
If health conditions permit it, the entrance for spectators will be free of charge for all the days of the competition.

15. OFFICIAL HOTELS

15.1 HQ Hotel

OLISSIPPO ORIENTE HOTEL ★★★★★

The Olissippo Oriente Hotel is a modern 4 stars unit located at “Parque das Nações” in Lisbon Business District. The close proximity to the Lisbon Oceanarium, the Exhibition Centre (FIL), the Altice Arena, the Vasco da Gama Shopping Center and the Lisbon Casino, as well as to several business offices, stands out as one of its main features. This hotel is a 5 minute walk from Altice Arena.



15.2 Official Hotels

HOTEL TIVOLI ORIENTE ★★★★★

The modern Tivoli Oriente Lisboa Hotel has everything you need for your adventure in Lisbon.

Located in Parque das Nações, in the new Eastern area of Lisbon and just a 5 minute drive from Lisbon Airport, the hotel has exceptional access to the city's public transport network, main roads and to other amazing cities close to Lisbon, such as Sintra and Cascais.

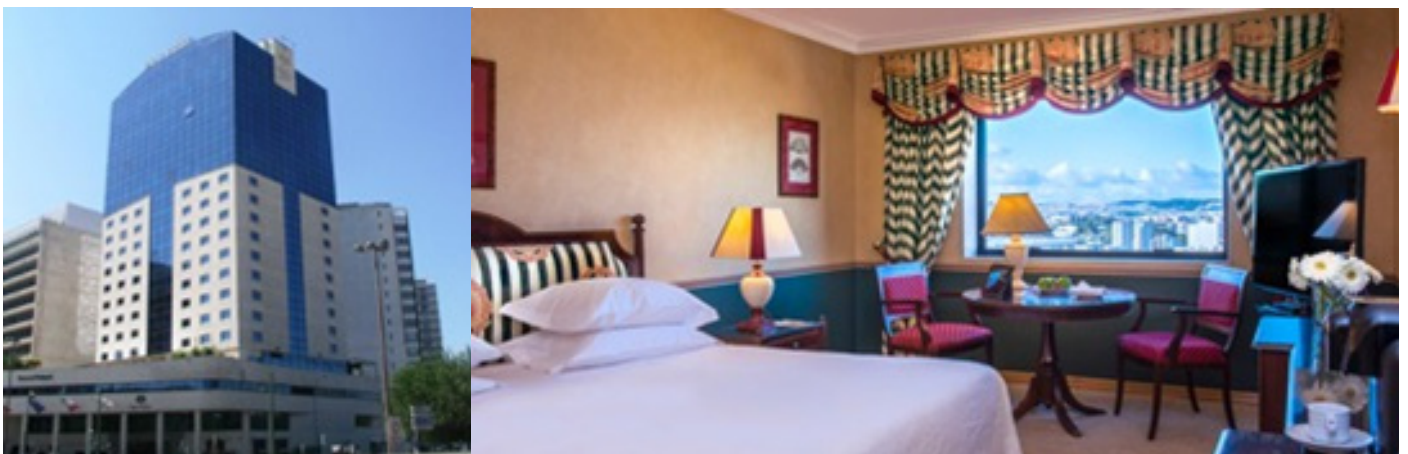
This hotel is a 5-minute walk from Altice Arena.



HOTEL DOM PEDRO ★★★★★

Dom Pedro Lisboa is the perfect 5 stars hotel for a stay in Lisbon city centre, whether on business or leisure. The hotel combines grace, elegance and tradition with attention to detail of a service of excellence dedicated to guests, representative of the quality of Portuguese hospitality, for a memorable stay.

The hotel is located in the city centre, in front of the Amoreiras Shopping Center, near the Marquês de Pombal and Avenida da Liberdade, 10 minute walk from the typical neighbourhoods of Campo de Ourique and Príncipe Real and 7 km far from the airport.

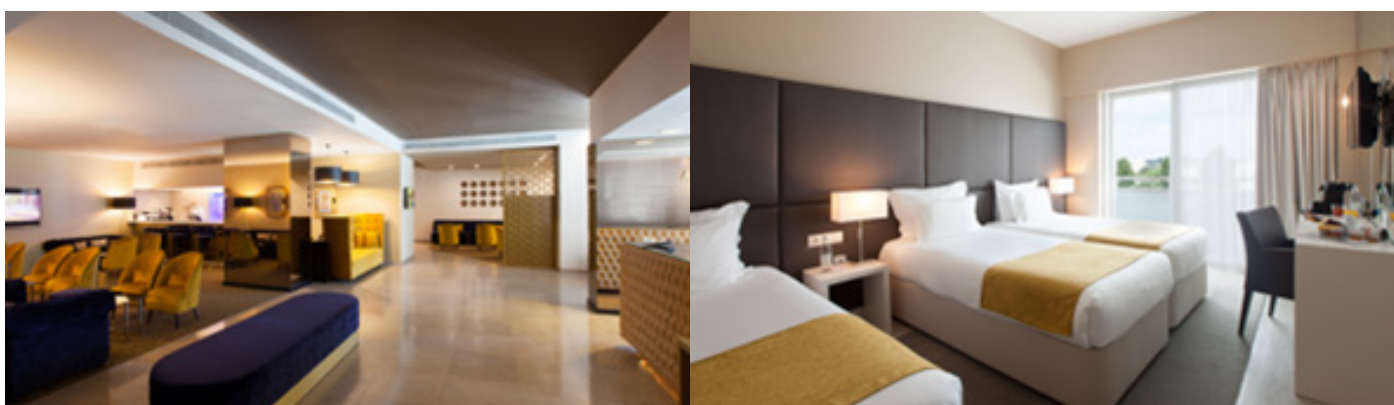


HOTEL LUTÉCIA ★★★★★

The Lutezia Smart Design Hotel is a modern 4 stars hotel in the heart of Lisbon. Since 2006 belongs to a Portuguese family that believes that the essence of Hospitality is a continuous recognition of its customers, both in terms of service as well as in terms of the product.

We formed a team for whom there are no impossibilities, giving their best every day and to every customer so that each one feels like they made the best choice. We believe that only with total dedication, professionalism and friendliness, we can engage and conquer those who choose us and therefore always wish to come back.

Located on one of the most iconic streets of Lisbon, Av. de Roma, of the city, it is served by several public transportation, including the metro, making it simple to reach other popular destinations like the Parque das Nações and Altice Arena.



HOTEL MUNDIAL ★★★★★

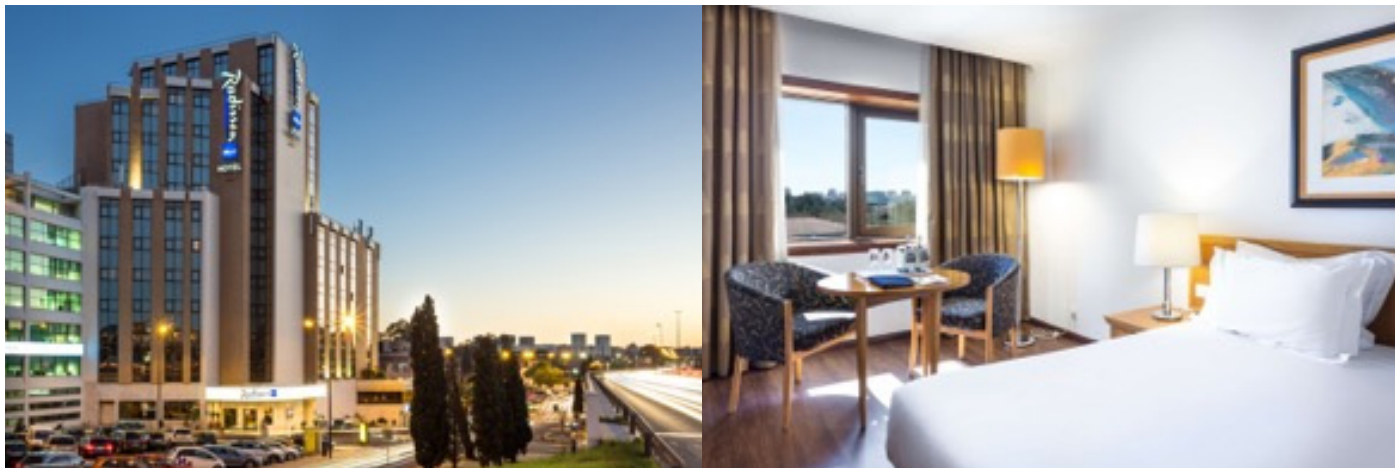
Settled in Lisbon city center, Hotel Mundial is an iconic 4 stars hotel which doors have opened for the first time in 1958. Currently boasting 349 rooms that combine the original character with today's sophistication and comfort, this timeless city hotel, once house to famous guests, stands out as a landmark in the Portuguese capital's history.

In a walking distance to the downtown and several metro stops, making it simple to reach other popular destinations like the Parque das Nações and Altice Arena.



HOTEL RADISSON BLU LISBON ★★★★★

Our designer hotel in the capital of Portugal is perfectly situated in the Campo Grande district and just 15 minutes from the Lisbon city center. Stay just 3 kilometers from Humberto Delgado Airport (LIS). Within walking distance of the hotel, you'll find the Football Stadium Alvalade XXI and the Campo Grande metro stop, making it simple to reach other popular destinations like the Parque das Nações and Altice Arena.

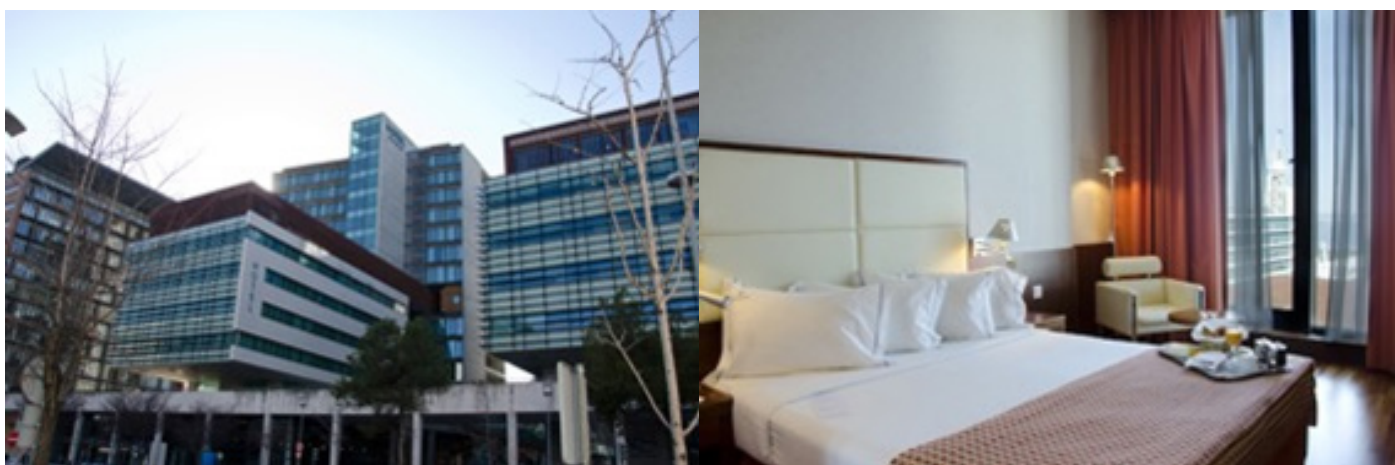


HOTEL VIP ARTS ★★★★★

Strategically located in Parque das Nações, the VIP Executive Art's Hotel offers a wide variety of options in terms of dining, entertainment and business.

It consists of 300 rooms (including 8 suites and a presidential suite), combining modern design and all the required comfort to meet the demands and well-being of its guests.

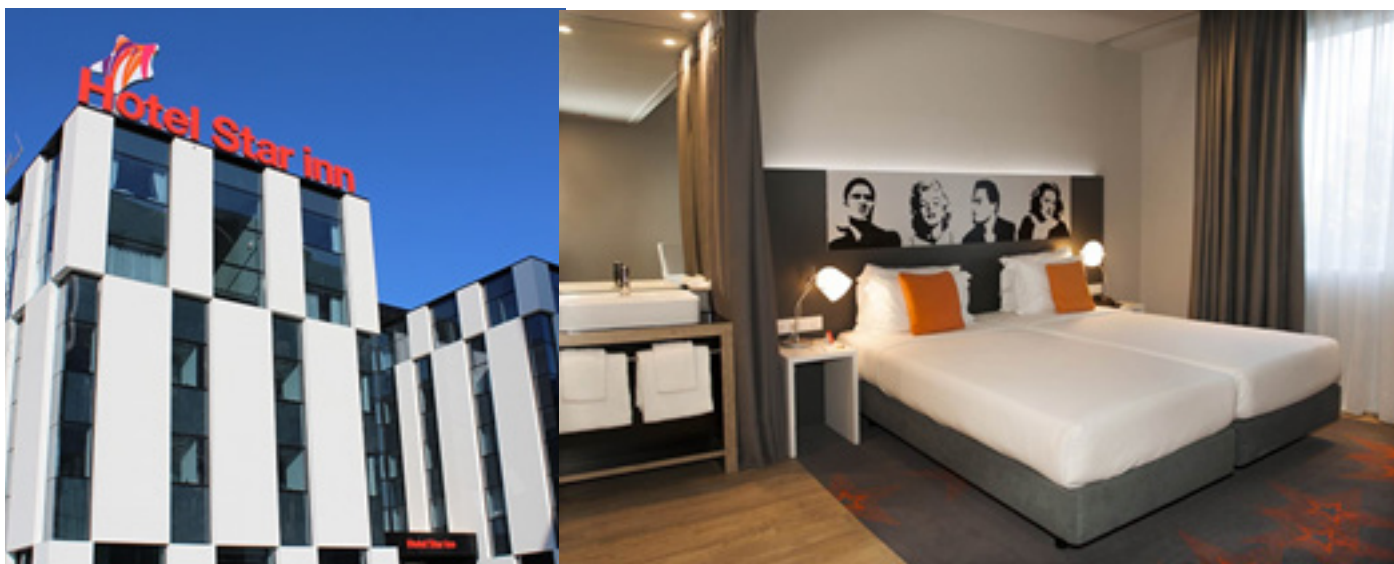
This hotel is a 5-minute walk from Altice Arena.



HOTEL STAR INN LISBOA ★★☆☆

The Hotel Star inn Lisbon is a 3-Star Hotel located only 100 meters from the Lisbon International Airport. It consists of 173 rooms and offer guests a quiet atmosphere that enables them to recharge energies before and after a long flight.

This hotel is a 15-minute walk from Altice Arena.



HOTEL TRYP AEROPORTO ★★★★★

The TRYP Lisboa Aeroporto is a 4-star hotel with 168 rooms.

Located right by Lisbon Humberto Delgado Airport, the Hotel TRYP Lisboa Aeroporto stands next to Terminal 1, 2 minutes away from the metro and 1 minute away from several bus stops which will take you anywhere in Lisbon.

This hotel is a 15-minute walk from Altice Arena.



15.3 Hotels Prices

All hotel prices include breakfast. Visitors to the Portuguese capital of Lisbon have to pay a Municipal Tourist Tax, which is currently €2 per person, per night.

HOTEL	SINGLE	DOUBLE	TRIPLE	RESERVATION
Hotel Olissippo	120,00 €	130,00 €	-	Mail to gabriela.almeida@olissippohotels.com with discount code "Premier League Karate – Feb 17/23"
Hotel Tivoli Oriente	105,00 €	115,00 €	-	Mail to a.andre@tivoli-hotels.com with discount code "MB0002482443"
Hotel Dom Pedro	90,00 €	100,00 €	-	Using www.lisboa.dompedro.com/ with discount code "K1LISBOA"
Hotel Lúcia	73,00 €	77,00 €	110,00 €	Using www.luteciahotel.com with discount code "kar2021"
Hotel Mundial	90,00 €	95,00 €	-	Using www.hotel-mundial.pt with discount code "KARATE PL2021"
Hotel Radisson	90,00 €	100,00 €	-	Mail to angela.almeida@grupo-continental.com and patricia@grupo-continental.com with discount code "Karate Premier League 2021"
Hotel Vip Art's	75,00 €	80,00 €	-	Mail to vendas.arts@viphotels.com with discount code "Karate Premier League 2021"
Hotel Tryp Aeroporto	89,00 €	99,00 €	-	Mail to eventos.aeroporto@hotihoteis.com with discount code "Karate Premier League 2021"
Star Inn Lisbon	60,00 €	70,00 €	-	Mail to eventos.aeroporto@hotihoteis.com with discount code "Karate Premier League 2021"

16. WKF COVID PROTOCOL

DUE TO THE CURRENT EMERGENCY HEALTH SITUATION THIS EVENT WILL BE HELD UNDER THE WKF COVID PROTOCOL.



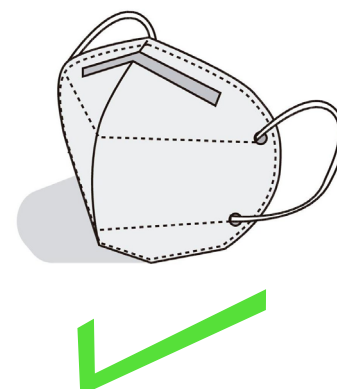
Key Elements

Karate in Times of Coronavirus

CERTIFIED FACE MASKS

The use of Certified Masks of FFP2 type or equivalents (N95 (United States), KN95 (China), P2 (Australia/New Zealand), Korea 1st class (Korea), DS2 (Japan)) within the specifications for use is always mandatory in the venue, with the exceptions for athletes that are detailed herein.

Once an athlete enters the venue grounds the athletes must always wear Certified Masks except while warming up, training, and competing in the designated areas/tatamis, respectively. This also means the Certified Mask shall be worn in transit between the Warmup and Competition Areas.



NOT ALLOWED MASKS



Surgical



Industrial



With Valve



Cloth

17. REQUIRED DOCUMENTS

1



**HEALTH
QUESTIONNAIRE**

3^a



**WAIVER
RESPONSABILITY**

2



**DELEGATION
FORM**

3^b



**PARENTAL
CONSENT**

PCR TESTING LISBON (DEADLINE FRIDAY 23RD APRIL)

The Portuguese Karate Federation is collaborating with an official laboratory to carry out PCR Testing from 26th of April to the 3rd of May for anyone who may need it. The Deadline for booking a PCR Test is the 23rd of April and the results will be provided within 24 hours. For more information go the Sportdata – Lisbon PL- Downloads or click the links below to view the three PCR testing documents.

Information: [LINK](#)

Covid-19 Test Form: [LINK](#)

Authorization for Sharing Results: [LINK](#)

QUARANTINE EXEMPTION & TRAVEL TO PORTUGAL

1. FNKP President Letter [LINK](#)

2. Official Provision Portuguese Government for K1 PL Lisbon [LINK](#)

PASSENGER LOCATER CARD

All passengers traveling to Continental Portugal, either as a final destination, in transit or transfer, must complete this online form after checking-in for the flight. The proof of the filled out form will need to be presented at control points. <https://portugalcleanandsafe.pt/en/passenger-locator-card>

18. VISA REQUIREMENTS

List of third countries whose nationals are exempted from holding a VISA when crossing the external borders:

<https://imigrante.sef.pt/en/entrada-em-portugal/#1538043570153-e2e88a2a-13a0>

Applying for a Visa (Short Stay Visa/Temporary Stay Visa/Residence Permit):

<https://vistos.mne.gov.pt/pt/modelos>

19. LISBON / PORTUGAL INFORMATION

19.1 About Lisbon

Lisbon is the capital and largest city in Portugal with a population of 509,515 within its administrative limits on a land area of 85,8 Km². The urban area of Lisbon extends beyond the administrative city limits with a population of almost 3 million on an area of 3.015 Km², making it the 10th most populous urban area in the European Union. About 2.863.272 people live in the Lisbon Metropolitan Area (which represents approximately 28% of the population of the country). Lisbon is the westernmost large city located in Europe, as well as its westernmost ca-



pital city and the only one along the Atlantic coast. It lies in the western Iberian Peninsula on the Atlantic Ocean and the Tagus River.

Lisbon is recognized as a global city because of its importance in finance, commerce, media, entertainment, international trade, education, arts and tourism.

It is one of the major economic centres on the continent, with a growing financial sector and the largest/second largest container port on Europe's Atlantic coast.

Lisbon is one of the oldest cities in the world and the oldest city in Western Europe.

Locally, Lisbon inhabitants may more commonly refer the spaces of Lisbon in terms of historic bairros (neighbor-

hoods). These communities have no clearly defined boundaries and represent special quarters with a common historical culture, identifiable architectural landmarks, living standards and/or local personality, such as Alcântara, Bairro Alto, Alfama, Chiado, and so forth.

19.2 How to get to Lisbon

Lisbon Portela Airport serves over 31 million passengers annually (2019); the motorway network and the high-speed rail system of AlfaPendular link Lisbon to the main cities of Portugal. Lisbon also has a vast metro network.

19.3 Practical Information

Currency:	Euros (€)
Time Zone:	UTC/GMT +1 hour
Weather in Lisbon:	max. 20°C during the day and 12°C at night in April.
Emergency services:	112 (medical, police, fire)
Electricity:	220 Volts / 50 Hz

20. MERCHANDISING

If health conditions permit it, there will be commercial stands selling official products, equipment and other merchandising with official branding.

21. OMISSIONS

As regards that the specific items are not expressly foreseen in the present bulletin reference is to be made to the general rules and guidelines contained in WKF Regulations.

2021

ISTANBUL LISBON
TASHKENT
MOSCOW RABAT



WORLD KARATE FEDERATION
www.wkf.net